

i-to-i

TEFL
INTERNSHIP

THAILAND



EXPLORE THAILAND.

TEACH ENGLISH.

make memories!



CONTENTS

To your next destination »

p.14
ORIENTATION



p.02
TEACH ENGLISH
IN THAILAND



p.18
A DAY IN THE LIFE
OF A THAILAND TEFL
TEACHER

p.04
WHAT'S
INCLUDED?



p.20
JACKIE'S THAILAND
STORY

p.22
WHAT'S THE
COST?



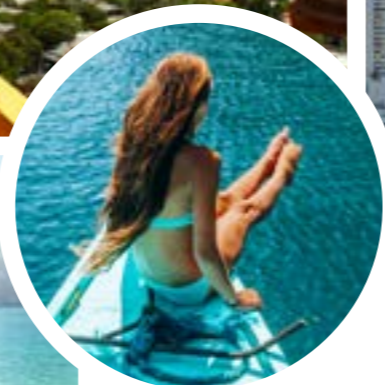
p.10
WHAT'S MY
ROLE?



p.08
THE TEFL
COURSE



p.12
WHERE WILL I
BE PLACED?



p.24
FREQUENTLY
ASKED QUESTIONS



TEACH ENGLISH IN THAILAND

If you like the idea of teaching and travelling in one of the most beautiful places on the planet – our Thailand TEFL Internship is just for you! You could be spending a fun-filled 2 months living with fellow interns and teaching English to local Thai children.

Your trip of a lifetime will start in the ancient capital of Thailand, Ayutthaya, where you'll enjoy a busy orientation stay. Your

teaching Internship will be in the beautiful Kanchanaburi, a rural area surrounded by stunning landscapes – a traveller's dream!

During your Internship, you'll get free accommodation, in-country support throughout and your TEFL training included. What's not to like?!

BACK TO BASICS! WHAT IS TEFL?

TEFL just means Teaching English as a Foreign Language! If you've been dreaming of earning money while you travel, making unforgettable memories and learning a sparkly new skill, TEFL is pretty much perfect for you!

Our qualifications, accreditations and friends:

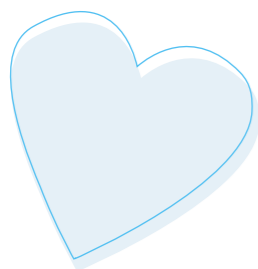


WHAT'S INCLUDED?

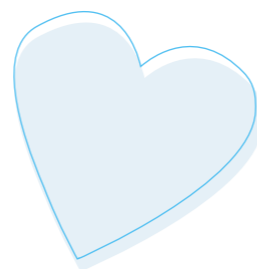
7 weeks'
practical teaching
experience

Airport pick-
ups & transfers

120 hours
online TEFL
training



ADVICE
& pre-departure
preparation



ACADEMIC
& in-country
support

ACCOMMODATION

School
LUNCHES



Before you jet off to Thailand, we'll make sure you're fully prepared with our English Government-regulated 120 Hour Online TEFL Course. You'll benefit from unrivalled tutor support throughout your course and upon completion, your shiny new certificate will be internationally recognised. So, if you fancy continuing your TEFL career elsewhere, you'll be covered!

You'll also benefit from full support before and during your Internship through our dedicated Customer Support Team and

in-country team in Thailand. We can assist you with your Internship application, give guidance on visas, provide help and support with any personal matters throughout your stay and answer any queries or concerns you might have in the run-up to your trip.

Plus our support doesn't end when the Internship's over. Although it's not something you want to think about now, you may want to come back home! We'll be there post-Internship to offer job guidance, or further travel opportunities...



WHAT DO I NEED?



- To be a native English speaker
- To be aged between 18-35
- Be ready for an adventure!



WHAT YOU DON'T NEED:



- Prior teaching experience
- A university degree
- A second language

THE TEFL Course

Before you swap your boots for flip-flops, you'll need to complete your 120 Hour Online TEFL Course, which is included in your Internship package.

This typically takes between 4-6 weeks so make sure you give yourself a good amount of time to complete it. With videos, quizzes and interactive activities it should be fun and informative, giving you total confidence to teach English when you arrive in Thailand.



THE 120 HOUR ONLINE TEFL COURSE IN A NUTSHELL:

- Essential 120 Hour Online TEFL Course
- Flexible studying 24/7
- Study online on your tablet, computer or phone
- Access to unrivalled tutor support throughout
- English Government-regulated qualification
- Recognised by employers across the world



CHECK OUT OUR TEFL COURSES TO READ MORE >>



WHAT'S MY ROLE?

Our Thailand TEFL Internship is the perfect entry into the world of TEFL teaching!

Your role as a TEFL teacher consists of:

- Planning and preparing lessons
- Taking English classes in a Thai school
- Helping to create fun activities
- Getting involved in extra-curricular activities

BONUS: You'll get plenty of time off to spend exploring the local area, discovering its temples, food and world-class scenery.





WHERE WILL I BE PLACED?

Your orientation will start in the ancient capital of Thailand, Ayutthaya before it's time to travel over to Kanchanaburi.

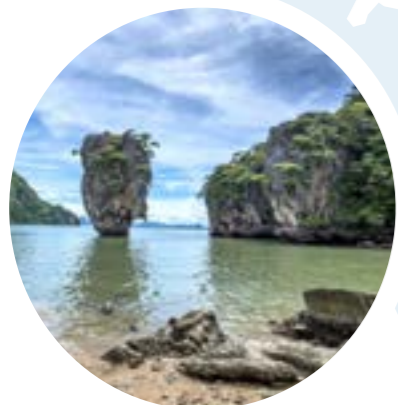
All our Thai schools are in secluded small towns and villages, and your students will have a really basic knowledge of English, so there's an opportunity for some really rewarding teaching here!

Ayutthaya

When you touch down in Bangkok, you'll be met by our team before being transferred for your orientation in Ayutthaya. This incredible place is the former capital of Thailand and the ruins of this ancient city are preserved in the lush greenery of the national park. A peaceful and picturesque change to bustling Bangkok, you'll have time to relax and explore its stunning temples.

Kanchanaburi

The Internship part of your package takes place in the beautiful region of Kanchanaburi in the west of Thailand. Surrounded by natural waterfalls and pretty rivers, the area is a traveller's dream and a perfect location to explore the rest of Thailand!



ORIENTATION

Touch-down in Thailand!

1

When you arrive at Bangkok airport, our friendly in-country partners will be there to meet you and transport you to Ayutthaya, about an hour away.



2

The next 3 days are your chance to meet the other interns (your new best friends!), discover Thai culture and history, and explore your beautiful historic surroundings with some expert guidance!

3

With accommodation, meals and transfers included, your orientation will be the perfect hassle-free way to settle into the country you'll call home for the next couple of months! On your final day, you'll be transferred to where you'll be teaching. Exciting times!



A DAY IN THE LIFE OF A THAILAND INTERN



7:30 AM

Meet and greet your students at front gate of the school, ready for a fun-filled day of teaching!



8:00 AM

Assembly time – you'll spend half an hour in the main hall with your students.



8:30 AM

Time for lessons! You might not be teaching for the full 3 hours so the remaining time will be spent creating exciting lesson plans and fun resources.



11:30 PM

A lovely long hour for lunch – enjoy delicious traditional Thai food or your own packed lunch, whichever you prefer.



12:30 PM

Afternoon lessons – again, you may not be teaching for the full 3 and a half hours so spend your remaining time wisely!



4:30 PM

Say goodbye to students at front gate and it's off to meet your fellow interns for a bite to eat!



Jackie's

THAILAND STORY

NOW YOU'VE HEARD FROM US, HEAR FROM A REAL LIFE INTERN. MEET JACKIE, WHO'S RECENTLY FINISHED HER INTERNSHIP IN THAILAND AND LOVED EVERY SECOND!



At first the idea of travelling to Thailand was very daunting but I can honestly say it was the best decision I have ever made in my life. My original plan was to stay in Thailand only for 5 months but I've extended my stay for an extra 9 months. Teaching in Thailand was an incredible experience and

the joy of seeing your students every morning brightens up your day. Your students become a major part of your daily life and, with their uplifting spirits, it's very difficult to be down and out. I can't recommend it enough to anyone that wants to travel and teach I'm Thailand! JUST DO IT!

Jackie Moriarty, UK



HOW WOULD YOU RATE THE EXPERIENCE?



WHAT'S THE COST?

£1,195 (SUBJECT TO OFFER)

This covers:

- Your 120 Hour Online TEFL Course
- Access to consistent support from your booking date until the end of your trip
- Placement in a suitable school
- Accommodation and school lunches
- Assistance with visas/applications
- An assigned in-country mentoring service
- Orientation in Ayutthaya
- Transfers to and from Bangkok airport
- Farewell dinner

Other costs

FLIGHTS:

- These aren't included in the price so you'll need to cover return flights to Bangkok International Airport (BKK) yourself.

VISA:

- This costs approx. £25/\$35 and although we can help you organise it, you'll need to factor this into your budget.

POLICE CHECK:

- This costs approx. £25 in the UK but will vary for other countries. Contact your local police department to find an exact cost for your trip.

BUDGET OF £30/€50 PER MONTH:

- You'll need this to cover meals that aren't included, as well as spending money whilst your out there.

TRAVEL INSURANCE:

- You'll need to arrange cover for your whole trip.

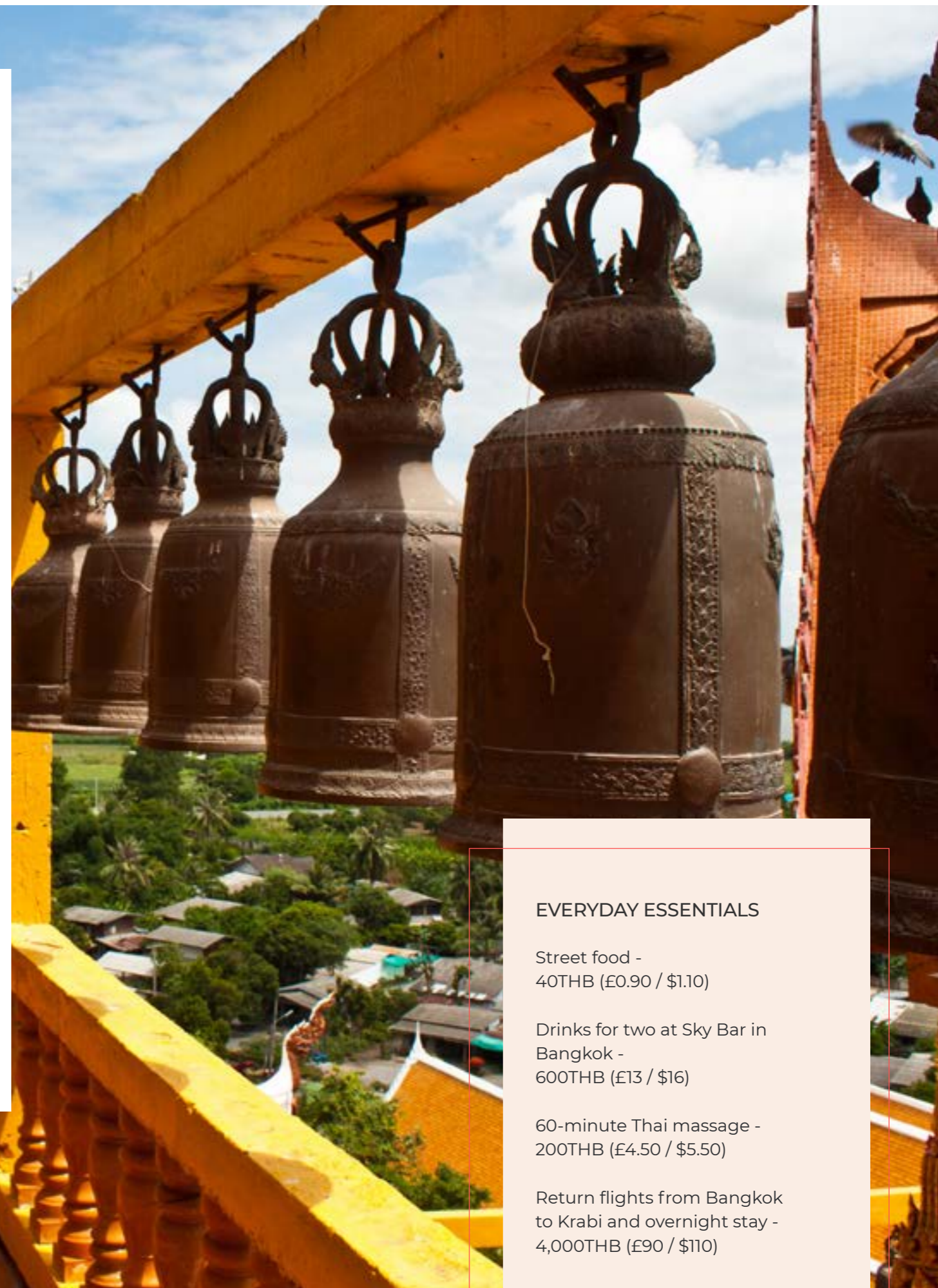
EVERYDAY ESSENTIALS

Street food -
40THB (£0.90 / \$1.10)

Drinks for two at Sky Bar in
Bangkok -
600THB (£13 / \$16)

60-minute Thai massage -
200THB (£4.50 / \$5.50)

Return flights from Bangkok
to Krabi and overnight stay -
4,000THB (£90 / \$110)



FREQUENTLY ASKED Questions

Q: DO I NEED TO BE ABLE TO SPEAK THAI?

Nope! Feel free to learn on the basics before you go but you won't be expected to speak to your students in anything other than English!

Q: WHAT WILL MY WORKING HOURS BE?

Your hours will be Monday-Thursday 7.30am-4.30pm and Friday 7.30am-13.30pm. This includes 2-4 hours teaching each day, the rest of the day is taken up with things like lesson planning and creating resources.

Q: WHAT AGE STUDENTS WILL I BE TEACHING?

Your students will be between 3-18 years old because it depends on the school you are placed at. If you have a particular preference for a certain age group, you can request to work with them. Although we can't guarantee this, we'll do our very best!

Q: CAN I GET A DISCOUNT IF I'VE ALREADY GOT A TEFL QUALIFICATION?

Yes! If you're already qualified, give our team a call on +44 (0) 113 205 4610 for more information.

Q: WILL I NEED TRAVEL INSURANCE?

Yes! You'll need to arrange travel insurance to cover the entire length of your trip. This is at your own cost and needs to be arranged in advance of travelling.

Q: WHAT VISA DO I NEED?

To teach and travel in Thailand for 2 months, you'll need to have a 60-day tourist visa. To get your visa in good time, you'll need to apply for it between 3 months-4 weeks prior to your departure date. Our Customer Support team can help advise you on what's needed.

Q: WILL I HAVE A POINT OF CONTACT AT THE SCHOOL TO GO TO IF THERE ARE ANY PROBLEMS?

Yes, you'll be assigned a mentor at your school who is there to assist you in both academic and personal matters so you're never alone!

Q: WHAT WILL MY ACCOMMODATION BE LIKE?

During your Internship, you'll be staying on the school campus in accommodation provided by the school. You'll be placed with at least one other intern and you'll be given a bike to get around on so there's plenty of opportunity to socialise and get to know your local community!



HAPPY TEFLING!



i-to-i

