

*i-to-i*

PAID  
**INTERNSHIP**

---

CHINA





EXPLORE CHINA.  
TEACH ENGLISH.  
*make memories!*





# CONTENT

To your next destination »

**p.14**  
ORIENTATION



**p.16**  
A DAY IN THE LIFE  
OF A CHINA TEFL  
TEACHER



**p.02**  
TEACH ENGLISH  
IN CHINA



**p.04**  
WHAT'S  
INCLUDED?



**p.10**  
WHAT'S MY  
ROLE?



**p.18**  
WHAT'S THE  
COST?



**p.20**  
FREQUENTLY  
ASKED QUESTIONS



**p.08**  
THE TEFL  
COURSE



**p.12**  
WHERE WILL I  
BE PLACED?





# TEACH ENGLISH IN CHINA

If you like the idea of getting paid to teach and travel while immersing yourself in an amazing new culture – our [Paid China TEFL Internship](#) is totally perfect! You could be spending around 12 fun-filled months living in free accommodation that we've carefully chosen, teaching English to students in schools or language centres.

During your Internship, you'll earn a good salary of 8,000RMB (approx. £930/US\$1260) which is yours to spend as you wish. Plus, at the end of your contract, you'll receive a further 8,000RMB completion bonus – perfect to fund further travels. Your school also provides 3 meals a day through the working week, meaning you'll have plenty of money left over for days off!

## BACK TO BASICS! WHAT IS TEFL?

TEFL just means Teaching English as a Foreign Language! If you've been dreaming of earning money while you travel, making unforgettable memories and learning a sparkly new skill, TEFL is pretty much perfect for you!

Our qualifications, accreditations and friends:





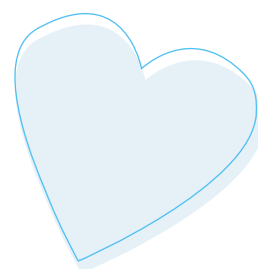
# WHAT'S INCLUDED?

Approx.  
**10 months'**  
practical teaching  
experience

**Airport pick-  
ups** & transfers

**120 hours**  
online TEFL  
training

**MONTHLY  
SALARY**  
of 8,000RMB  
(£930/US\$1260)



**3**  
MEALS EVERY SCHOOL  
**day**

**ACADEMIC**  
& in-country  
support

**A**CCOMMODATION

Orientation in  
**BEIJING**



**T**he beauty of our Paid China TEFL Internship is that everything's sorted for you! With over 23 years' experience TEFLing, we've built up reputable contacts worldwide so you're safe in the knowledge that everything from the school where you teach to the accommodation where you stay is tried, tested and trusted!

Before you start your exciting new adventure, we'll make sure you're fully prepared to teach with our English-government regulated 120 Hour Online TEFL Course. You'll benefit from unrivalled tutor support throughout your course and upon completion, your shiny new certificate will be internationally recognised. So, if you fancy continuing your TEFL career elsewhere, you'll be covered!

You'll also benefit from full support before and during your Internship through our dedicated Customer Support Team and our trusty in-country partners. We can assist you with your job application, give guidance on visas, provide help and support with any personal matters throughout your stay and answer any queries or concerns you might have in the run-up to your trip.

Our support doesn't end when the Internship's over. Although it's not something you want to think about now, you may want to come back home! We'll be there post-trip to offer further job guidance, or other travel opportunities...





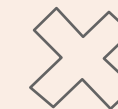
WHAT DO  
I NEED?



- To be a fluent English speaker
- To hold a passport from the UK, Ireland, USA, Canada, Australia or New Zealand
- To be aged between 20-50
- To hold a bachelor's degree or above
- A clean police check



WHAT YOU  
DON'T NEED:



- Prior teaching experience
- A second language



---

# THE TEFL *Course*

Before you swap your boots for flip-flops, you'll need to complete your 120 Hour Online TEFL Course, which is included in your Internship package.

---

This typically takes between 4-6 weeks so make sure you give yourself a good amount of time to complete it. With videos, quizzes and interactive activities it should be fun and informative, giving you total confidence to teach English when you arrive in China.

## THE 120 HOUR ONLINE TEFL COURSE IN A NUTSHELL:

- Flexible studying 24/7
- Study online on your tablet, computer or phone
- Access to unrivalled tutor support throughout
- Developed with leading language schools
- English-government regulated qualification
- Recognised by employers across the world





# WHAT'S MY ROLE?

Our Internships offer excellent teaching roles with reputable schools and training centres, providing practical teaching experience for first-time TEFL teachers. Your role will involve teaching English in Beijing, Shanghai or Guangzhou. The class sizes here are larger than home, with up to 40-50 students in a school group – but don't worry, you'll feel totally prepared with your TEFL training! If you totally fall in love with teaching in China (which you will!) once your contract ends, you're free to re-negotiate your contract directly with the school.

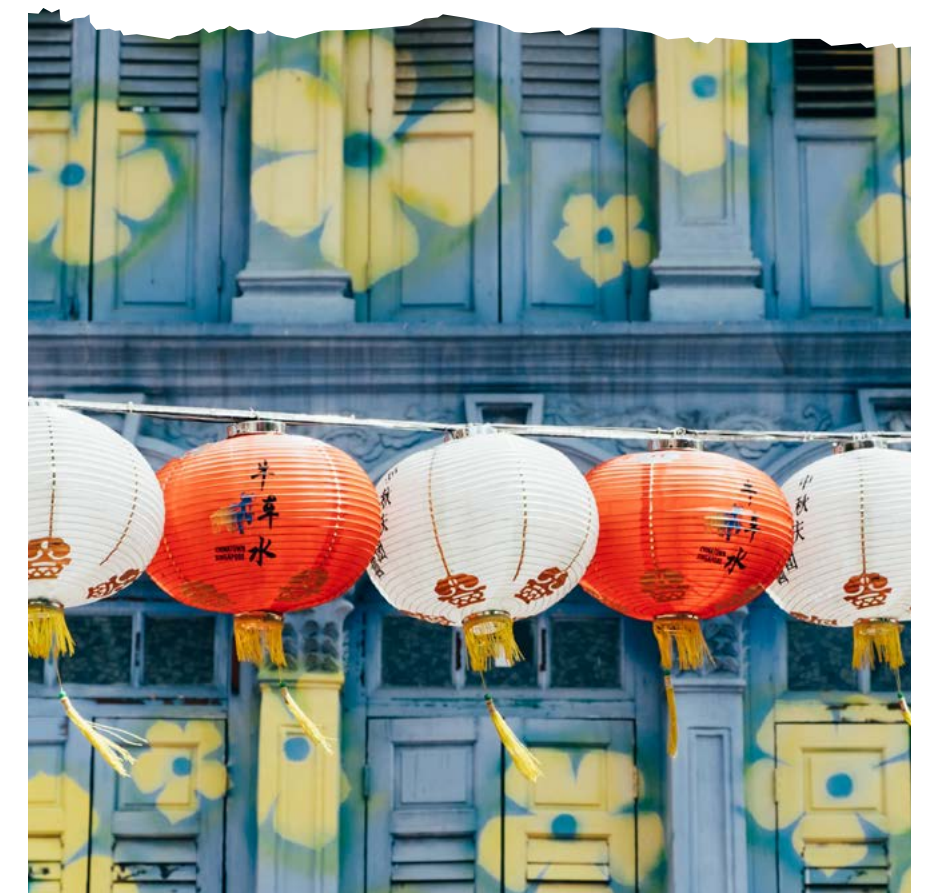
Your role as a TEFL Teacher consists of:

- 40 hours working week, including 20-25 teaching hours
- Teaching English to students aged 3-18
- Creating lesson plans, attending meetings, helping with extracurricular activities
- 2 days off a week, with potential evening and weekend work

Let's talk money!

You'll be earning a good salary of 8,000RMB per month, and with free accommodation and school day meals, you'll have plenty left over for days off and all the best Chinese food!

**BONUS:** Once your job contract successfully comes to an end, you'll receive a completion bonus of 8,000RMB – a great amount to start a future travel fund!







BEIJING  
北京市

SHANGHAI  
上海市

GUANGZHOU  
广州市

## WHERE WILL I BE PLACED?

Our [Paid China TEFL Internship](#)'s currently located in schools and language training centres in Beijing, Shanghai and Guangzhou.

**Beijing:** China's huge capital, with unrivalled history and jaw-dropping architecture. With ancient sites like the grand Forbidden City, Tiananmen Square and, of course, the Great Wall, you won't be short of epic things to do on your days off!

**Shanghai:** China's biggest city built on the Huangpu River, with a stunning waterfront area and futuristic skyline. With the famous Shanghai Tower and the Oriental Pearl TV Tower, you'll get used to having incredible views over an impressive city!

**Guangzhou:** China's third largest city, is the capital of the region and the birthplace of Cantonese food (think the best Chinese takeaway ever!). Built on the Pearl River, Guangzhou has a 2,200 year history, mixing ancient traditions with a super modern skyline.





# ORIENTATION

Touch-down in Beijing!

北京市



1

When you arrive into Beijing airport, our friendly in-country partners will be there to meet you and transport you back to the hotel, where you'll stay for the next 2 nights.

3

The next day you'll be transported to your accommodation and school - the place you'll call home for the next few months! Exciting times!

2

After a good night's rest, the day will start with a brief introduction, followed by a city tour to get your bearings, before you're all treated to a delicious welcome meal! You'll be with fellow teachers all day, so grab the opportunity to get chatting and make friends – you might make a travel-buddy out of it!





# A DAY IN THE LIFE OF A CHINA TEFL TEACHER



8:00 AM

Breakfast time! Your school will provide you with a brilliant breakfast to set you up for the day.



9:00 AM

Your first class of the day starts. You'll be taking English classes throughout the day, getting to know your students and putting your TEFL course into practice!



12:30 PM

Time to eat and chill out in between lessons – again, the school provides this meal free of charge\*. You can use this time to get to know the other teachers and make some more friends!



1:30 PM

After a refreshing lunch, it's back to the classroom for afternoon lessons.



5:30 PM

The end of the teaching day - Maybe you'll get involved with extracurricular activities or do a bit of lesson planning before it's home time!



6 PM

Your school will provide a delicious dinner for you to enjoy with your fellow teachers.



7:30 PM

Once you're home, why not meet with fellow TEFLers and explore the local area – there's so much to see and do!

\*If the school cannot provide food, the teachers will be given a food allowance of 750RMB per month – paid into your monthly salary



# WHAT'S THE COST?

£1,295 (SUBJECT TO OFFER)

## This covers:

- Your 120 Hour Online TEFL Course
- Access to consistent support from your booking date until the end of your job
- An excellent teaching role in a reputable school
- Free accommodation
- Monthly salary of 8,000RMB and successful completion bonus
- Assistance with visas/applications
- An assigned in-country support contact
- Online teaching resources and recommendations for textbooks
- Orientation in Beijing – including meals, day tour and accommodation
- Airport pick up and transfer to placement school
- 3 meals a day, 5 days a week, provided by your school

## Other costs

### FLIGHTS:

- These aren't included in the price, so you'll need to cover them yourself (don't book until your visa and firm dates are confirmed!)

### VISA (NON-EU CITIZENS):

- This costs approx. US\$100.

### POLICE CHECK:

- This costs £25 in the UK. For other countries, please contact your local police department.

### BUDGET OF £250/US\$350 PER MONTH:

- You'll need this to cover the start of your trip until you get paid.

### TRAVEL INSURANCE

### NOTORISATION OF DOCUMENTS

### FULL MEDICAL CHECK

### HARD COPY PRINTED CERTIFICATE

### EVERYDAY ESSENTIALS

Train to Hong Kong -  
Around 200RMB (£22 / \$25)

Weekly food shop -  
Around 200RMB (£22 / \$25)

Drinks and dim sum for 2 at Ding  
Tai Fung in Shenzhen -  
Around 150RMB (£17 / \$24)

Chinese beer -  
Around 5RMB (£0.60 / \$0.80)





# FREQUENTLY ASKED Questions

## Q: DO I NEED TO BE ABLE TO SPEAK MANDARIN?

Nope! Feel free to learn a couple of basics before you go but you won't be expected to speak to your students in Mandarin at all.

## Q: WHERE WILL I BE LOCATED IN CHINA?

Your school or training centre will either be in Beijing, Shanghai or Guangzhou.

## Q: WILL I NEED TRAVEL INSURANCE?

Yes! Wherever you're from, you will need to book travel insurance and make sure it covers you for the full duration of the role.

## Q: HOW MANY HOURS WILL I BE TEACHING IN MY SCHOOL?

You'll be working a total of 40 hours per week including 20-25 hours of face-to-face teaching classroom, with the rest of the time spent lesson planning, marking, attending meetings and extracurricular activities with the school. You'll be working 5 days a week, with 2 consecutive days off guaranteed. Some evening and weekend work might also be needed from time to time.

## Q: HOW WILL I GET TO WORK EACH DAY?

Public transport – almost all of our schools are less than 45 minutes from your accommodation, so no really long commute in the mornings!

## Q: WHAT AGE STUDENTS WILL I BE TEACHING?

Your students will be anywhere between 3-18 years old, depending on the school you are placed at. The class sizes will be 40-50 students in schools and 20-30 in training centres – so maybe a little bigger than schools at home.

## Q: WILL I HAVE A POINT OF CONTACT AT THE SCHOOL TO GO TO IF THERE ARE ANY PROBLEMS?

Yes, as part of our Internships programme, you'll be assigned a dedicated support contact who'll be in regular communication with you, helping you sort any issues, whether they're work-related or personal. Our partners also monitor your school to make sure you're being looked after well and paid on time!

## Q: WHAT WILL MY ACCOMMODATION BE LIKE?

Your accommodation will be either a private bedroom in a shared apartment, or a university style dorm room. It's likely you'll be sharing a living room and bathroom with fellow teachers.

## Q: WHAT VISA DO I NEED?

You'll need to apply for a Z (Working) Visa which lasts 12 months – but don't worry, we're there every step of the way to help with your application.





# HAPPY TEFLING!



*i-to-i*

